



SCHOOL OF LIBERAL ARTS

INDIAN INSTITUTE OF TECHNOLOGY
JODHPUR

PLACEMENT BROCHURE

2023-2024





॥ त्वं ज्ञानमयो विज्ञानमयोऽसि ॥

CONTENTS

From the Director's Desk	1
Message from the Head	2
Placement Chair Message	3
SoLA Vision and Mission	4
Faculty	5
Academic Programs at SoLA: An Overview	6
Msc. Computational Social Sciences	7
MSc CSS Curriculum	8
Competencies & Job Profiles	9
Industry Testimonials on MSc CSS	10
MSc CSS Batch Profile	12
Doctoral Program	14
CoE on Arts and Digital Immersion (ADI)	15
Academic and Research Facilities	16
Industry Connect Team	18
Career Preparatory Program	19



॥ त्वं ज्ञानमयो विज्ञानमयोऽसि ॥

FROM THE DIRECTOR'S DESK



Greetings from IIT Jodhpur!

It is my pleasure to introduce the School of Liberal Arts (SoLA), the new avatar of the Department of Humanities and Social Sciences (HSS), IIT Jodhpur. SoLA's vision has been conceptualized keeping in mind IITJ's Vision Statement, which is to become 'a future- driven institute for nurturing excellence of thought; creating, preserving, and imparting knowledge; and using transformational technologies/ interventions with a multidisciplinary approach for responding to societal challenges and aspirations'.

SoLA has been founded on the principle that quality education in the Liberal Arts is a primary requisite for solving the multidimensional challenges that our current and future generations face. In operationalizing this core principle, the teaching, research and industry-connect seeks to recognize and amplify the disciplinary intersections between the Creative Arts, Humanities, Social Sciences, Natural Sciences and Technologies. The recently created MSc in Computational Social Sciences (MSc CSS) is an example of the attempt to create novel teaching programmes in emerging and transdisciplinary areas which are also responsive to the needs of industry.

I invite you to be part of this exciting journey and to meet and interact with our bright students who, I am sure, will exceed your expectations and justify the confidence of recruiters in the knowledge, skills and sensibilities of IITJ graduates.

Prof. Santanu Chaudhury

Director

IIT Jodhpur



॥ त्वं ज्ञानमयो विज्ञानमयोऽसि ॥

MESSAGE FROM THE HEAD



I am delighted to invite you to learn more about the School of Liberal Arts (SoLA), IIT Jodhpur and its students as part of the placement process. The School of Liberal Arts (SoLA), which was established in 2022, evolved from the Department of Humanities and Social Sciences (HSS), which had its inception in the year 2015. This is a critical milestone for a young department and represents our consistent improvement in academics and research. In accordance with the future-driven vision of IIT Jodhpur, the change in name signifies a change in orientation. The newly established School promotes the idea of transformation by breaking the traditional barriers between disciplines, and through multidisciplinary, transdisciplinary and interdisciplinary means, making an active intervention that will strengthen the existing research ecosystem of the institute.

Through the courses and programs offered by our School, we encourage students to become professionals whose practice and research bridge the gaps between the humanistic, the social, the environmental, and the technological domains. SoLA's flagship program is the two-year MSc in Computational Social Sciences (CSS) with a specialization in two tracks – Computational Economics and Computational Sociology. To promote a more nuanced dialogue between STEM and social sciences, the school also offers interdisciplinary cross-institute courses for engineering students at undergraduate, graduate and doctoral levels. Our doctoral students undertake innovative and important research in diverse disciplines such as Philosophy, Psychology, Sociology, Film Studies, Literary Studies, Linguistics, Cultural Studies, Public Health and other interdisciplinary areas.

The faculty of our school are distinguished academics, with rich intellectual capital who combine academic excellence with pedagogical innovations that represent their dedication and commitment to the vision of the School and IIT Jodhpur. We have already also started a Center for Excellence in Arts and Digital Immersion (ADI), which explores intersections between art and digital technologies. Our faculty were also involved in the creation of a Joint Certificate Course on Digital Healthcare System, which is offered by IIT Jodhpur and AIIMS Jodhpur.

The ethos of the School seeks to foster humanitarian values, diversity, inclusiveness, a passion for learning and building a culture of excellence in education and research. I am sure that our students will set new standards and open new frontiers in every field that their professional trajectory will open.

Dr. Farhat Naz

Associate Professor of Sociology
Head, School of Liberal Arts

PLACEMENT CHAIR MESSAGE



The School of Liberal Arts (SoLA) is an academic unit that evolved into a school from a department in 2022. This evolution is guided by the core defining feature of IIT Jodhpur, i.e., multidisciplinary and interdisciplinarity.

The evolution is a well-planned conscious decision; therefore, from the year 2022 itself, the school started MSc in Computational Social Science and launched another Master of Design (MDes) in 2023. The academic programs of SoLA are based on the core capacities of the Institute in different domains, including technical, science, social sciences, humanities, management, design, and innovation ecosystem. Thus, the students have the scope to learn from experts.

The vibrant culture of the school and the Institute exposes students to diverse opportunities to develop technical and soft skills. At SoLA, we aim to be at the forefront of liberal arts and imbibe the value of socially relevant, academically rigorous, and technically sound education.

Dr. Ankita Sharma

Associate Professor of Psychology
Placement Chair (SoLA)

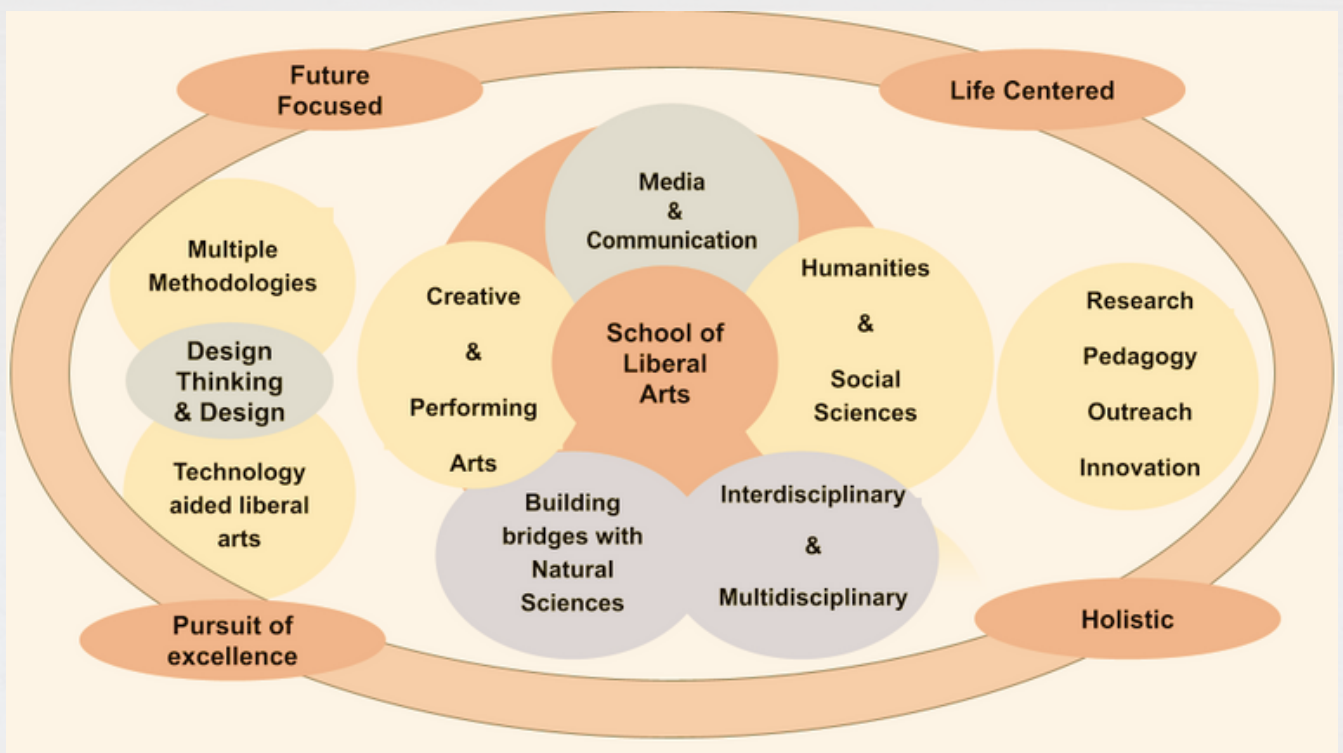
SOLA VISION & MISSION

The **vision of School of Liberal Arts (SoLA)** is to emerge as a forerunner in Liberal Arts education. The SoLA seeks to break the silos created by disciplinary boundaries and to reimagine the educational structure through an open approach. We strive to equip and enable students for the challenge of the future, while turning them into global citizens and able thinkers with an awareness of the needs and demands of contemporary society.

The goals of SoLA include:

1. To engage in foundational as well as socially relevant and benevolent research in the areas of Liberal Arts
2. To aid and guide the technologies developed to bring solutions for constructive changes in society and human life
3. To contribute towards nation-building
4. To enable and equip students to contribute to future societal needs
5. To formulate a sustainable financial plan that may create value for the organization

SOLA VISION





॥ त्वं ज्ञानमयो विज्ञानमयोऽसि ॥

FACULTY

One of the strengths of the School of Liberal Arts is the intellectual capital represented by the distinguished academics who are the core faculty. Major research groups in the department are focused along the following disciplinary/ interdisciplinary tracks:

SOCIOLOGY



Dr. Farhat Naz
Associate Professor
(Head of
the School of Liberal Arts)



Dr. Prasenjeet Tribhuvan
Assistant
Professor



Dr. Rachel Philip
Assistant
Professor



Prof. Chhanda Chakraborti
Visiting
Professor



Dr. George K.
Associate
Professor

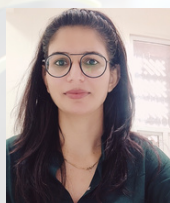


Dr. V. Harinarianan
Associate
Professor

PSYCHOLOGY



Dr. Ankita Sharma
Associate
Professor



Dr. Suman Dhaka
Assistant
Professor



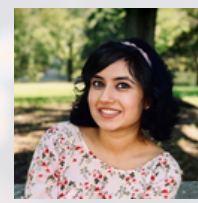
Dr. Alok Ranjan
Assistant
Professor



Dr. Ruhi Sonal
Assistant
Professor



Dr. Gopakumar
Assistant
Professor



Dr. Akanksha Choudhary
Assistant
Professor

ECONOMICS

LITERATURE, LINGUISTICS AND CULTURAL STUDIES



Dr. Vidya Sarveswaran
Associate
Professor



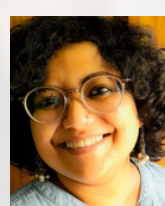
Dr. Anupama Mohan
Associate
Professor



Dr. Parichay Patra
Assistant
Professor



Dr. Natasa Thoudam
Assistant
Professor



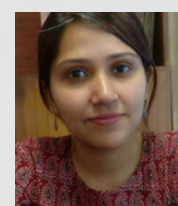
Dr. Tonisha Guin
Assistant
Professor



Dr. Sridevi D.
Assistant
Professor



Dr. Gurujegan Murugesan
Assistant
Professor



Dr. Kanak Yadav
Young Faculty
Associate

AFFILIATE FACULTY



Prof. Nimish Vohra
School of Management and
Entrepreneurship



Dr Dweepobotee Brahma
School of AI & Data Science.

ACADEMIC PROGRAMS AT SOLA: AN OVERVIEW

Undergraduate Courses: The School of Liberal Arts offer IIT undergraduates a holistic and self-reflective education, making them suitable for a changing global education and work ecosystem where disciplinary boundaries perish and interdisciplinarity emerges as the new norm. To achieve that, SoLA offers

- Preparatory Courses,
- Non-graded Courses like Technical Communication, Professional Ethics etc.,
- Bouquet Courses

which introduce undergraduates to various fields and topics in the Humanities and Social Sciences as well as Open Electives.

Post-Graduate Programs: SoLA's flagship program is two-year **MSc in Computational Social Sciences (CSS)** with specialization in Mathematical and Computational Economics and Computational Sociology. Another post-graduate program that will soon be launched is the **Masters in Design (MDes)**, a first-of-its-kind program in any IIT, which will focus on the areas of AR/VR/MR/XR/Immersive Media and its associated fields such as gaming, visual effects, animation and comics.

Doctoral Program: The School of Liberal Arts offers a Ph.D. Programme in diverse disciplines including Philosophy, Psychology, Sociology, Film Studies, Literary Studies, Linguistics, Cultural Studies, Public Health and other interdisciplinary areas.



MSC IN COMPUTATIONAL SOCIAL SCIENCES (CSS)

॥ त्वं ज्ञानमयो विज्ञानमयोऽसि ॥

Our MSc in Computational Social Sciences (CSS program) is designed to provide students with a comprehensive understanding of the fundamentals of social sciences and how these intersect with computational methods. This provides them with the ability to understand and address real-world problems in these domains.

Our highly-skilled graduates are equipped with theoretical, technical, and application-oriented knowledge, so that they:

- know how to use data-driven tools and approaches for social science queries
- have a good theoretical understanding of the intricacies of social systems
- are proficient in handling social data for practical applications
- have research-oriented thinking without traditional disciplinary or methodological constraints.





॥ त्वं ज्ञानमयो विज्ञानमयोऽसि ॥

MSC CSS CURRICULUM

COURSES

In the first year, students are exposed to introductory papers intersecting social science and computational methods (including Statistics, Programming in R, Machine Learning, Data Visualization etc.). These are aimed at preparing students to undertake tasks in data analytics and to derive insights.

In their second year, students will be able to specialize in: **(1) Mathematical and Computational Economics [or] (2) Computational Sociology (3) A Guided Curated Option for those who would like to opt for courses from both streams.**

The final semester of the course requires students to undertake a compulsory project at a relevant business / company / industry; or, at an academic organization.

We provide/create ample room for the students to analyze, apply, and construct academically-industrially sound models so they graduate as dexterous professionals, primed with both competence and confidence!





॥ त्वं ज्ञानमयो विज्ञानमयोऽसि ॥

COMPETENCIES & JOB PROFILES

CORE COMPETENCIES OF OUR STUDENTS

- Analytical abilities and experience in data analysis and interpretation
- Familiarity with Estimation Techniques, Programming Languages, Machine Learning and Data Visualization
- Ability to draw the interconnections between various socio-economic factors while framing, estimating and evaluating analytical frameworks in domains like policy analysis, financial modelling, etc.
- Effective problem-solving, collaboration and communication skills

JOB PROFILES

Following are some of the multiple industry domains that can be catered to with the diverse skillset developed in this course:

- Data Analytics
- Economic Analysis & Advisory
- Impact Assessment & Evaluation
- Public Policy & Development
- Business Intelligence
- Management Consulting
- Social Impact Consulting



॥ त्वं ज्ञानमयो विज्ञानमयोऽसि ॥

TESTIMONIALS FROM INDUSTRY

Human society has always been an interesting and intriguing field of study owing to the complex interactions of different players there. While traditionally theoretical approaches and social experiments were more prominent, in recent times data-driven and computational analyses are becoming increasingly popular. The two seemingly different scientific disciplines based on society and computers respectively have turned out to be complementary and symbiotic in their evolution resulting in the emergence of the field of computational social science (CSS). With the latest surge in the proliferation of artificial intelligence and data-driven technologies, the field of CSS is changing in a very interesting way, holding boundless potential for the future.



In recent years and decades, both human society and behaviour have been undergoing tumultuous changes owing to the increasing proliferation of digital tools and technologies. Their usage has become omnipresent across all spheres of social and interpersonal interactions resulting in the evolution of almost all social phenomena. Mobile phones, social networks, and AI-enabled generative text/image/video/speech tools are bringing in new facets which require new ways to analyze social phenomena. Secondly, with the constant rise of increased computational power and easy access to sophisticated tools for descriptive, predictive, and prescriptive analytics – like any other field, social science has become more data-driven. These tools have made conducting large-scale studies feasible and efficient, compared to what social science researchers could have done in the past. Analogously, data and AI researchers are drawing inspiration from important and interesting social challenges for their research. The growing interplay of these two disciplines has been making CSS an increasingly and truly interdisciplinary and exciting field of study and research.

Dr. Shourya Roy

Senior Research Director, Flipkart,
President, ACM SIGKDD (India Chapter)
ACM Distinguished Member



॥ त्वं ज्ञानमयो विज्ञानमयोऽसि ॥

TESTIMONIALS FROM INDUSTRY



As the world goes through a rapid digital transformation, we see an increasing number of services getting digitalized, thereby generating humongous amounts of digital data about people and society. This naturally creates a huge demand for computational social scientists who are trained in computational techniques for analyzing large datasets that can unlock insights about people, their choices, opinions and states of mind, both as individuals as well as in the context of their social environment. These insights are likely to play increasingly important roles in predictive and prescriptive decision making for a knowledge society that can cater to the diversity and equality of its members.

Dr. Lipika Dey

Chief Scientist

Tata Consultancy Services (TCS) Research & Innovation

The Computational Social Science program seems to touch upon some of the most relevant aspects of how individuals work in cross functional setups and how teams can be more effective. Firms are investing to ensure engagement, efficiency and growth a lot, and at the heart of it, are individuals who have scope to understand and work better with each other. This program will enable students to understand the complexities involved and apply theoretical knowledge (across Analytics, ML, Economics, etc.) to improve overall functioning.



Mr. Deepkumar Verma

Principal Group Product Manager (GPM)

Microsoft Teams



॥ त्वं ज्ञानमयो विज्ञानमयोऽसि ॥

BATCH PROFILE

The present batch of students in MSc in CSS program has 8 students from diverse backgrounds including economics, political science and computer science. This group represents a talented pool of potential candidates who bring a strong combination of skills and experiences to the table, making them well-suited for a variety of roles and challenges.



 **Aniket**

Education: B.A Political Science & Geography

Research Interests: Public Administration, Policy Studies, Political Sociology, International Relations, Resource Management, Risk Management and Strategic Planning



 **Iltefat Ahmad Alhaque Jami**

Education: B.A(Honours) Business Economics

Research Interests: Econometrics, Computational Economics, Game Theory, Social Network Analysis, Machine Learning, Data and Artificial Intelligence



 **Manya Khanna**

Education: B.A (Honours) Economics

Research Interests: Econometrics, Computational Economics, Data Analytics, Game Theory, Responsible AI, UX design and research, Machine Learning



 **Niharika Maiti**

Education: Bachelors in Economics (Research); Minor in Design

Research Interests: Behavioral economics, Environmental Economics, Sociology



॥ त्वं ज्ञानमयो विज्ञानमयोऽसि ॥

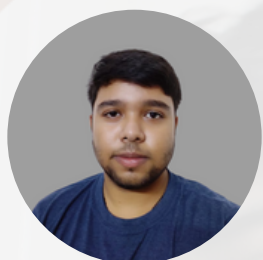
BATCH PROFILE



Education: B.A (Honours) Economics

Research Interests: Computational Economics, Development Economics, Game Theory, Social and Economic Networks, Machine Learning

 [Raashid Yaseen Shah](#)



Education: Bachelors in Computer Applications

Research Interests: AI & ML, Data Analytics, Data Science

 [Ratikant Dehury](#)



Education: B.A (Honours) Business Economics


Research Interests: Microeconomics, Development Economics, Environmental Economics, Artificial Intelligence

 [Shubhi Verma](#)



Education: Bachelors in Management Studies

Research Interests: Machine Learning & AI, Development Sociology, Social & Business Analytics, Management Consulting

 [Shyan Pal](#)



॥ त्वं ज्ञानमयो विज्ञानमयोऽसि ॥

DOCTORAL PROGRAM

The School of Liberal Arts (SoLA) offers a Ph.D. Program in diverse disciplines including Philosophy, Psychology, Sociology, Film Studies, Literary Studies, Linguistics, Cultural Studies, Public Health and other interdisciplinary areas.



The rigorous program seeks to develop outstanding researchers who have a deep understanding of the theoretical and practical aspects in their areas of enquiry. The kind of training that our scholars receive equips them for various careers including those in academics, research and industry.



CENTER OF EXCELLENCE ON ART AND DIGITAL IMMERSION (ADI)

This newly established Center within SoLA explores the intersections between art and digital technologies, such as art analytics, content development for the newer art forms, social history and sociological analysis of the newer art forms

By digital immersion, it refers to the merger of the physical world with the digital world of data. Digital immersion will include digitalization of arts, use of technologies such as Virtual Reality (VR), Augmented Reality (AR), Mixed reality (MR), Extended reality (XR) to create an enhanced environment for art appreciation or art experience, digital gaming.



ACADEMIC AND RESEARCH FACILITIES



LANGUAGE LABORATORY

The **Language Laboratory**, located within the Central Library at IIT-Jodhpur is designed to provide students with an interactive learning environment for practical training in English. The lab actively engages students in exercises through its collaboration with SANAKO, a company that produces specialized software to enhance language learning for non-native English speakers. The spatial layout and software facilities of the lab are designed to maximize immersive language learning and developing fluency and mastery of English.

The **Psychology laboratory** is a Positive-Cognitive Psychology lab focusing on 'OPTIMAL HUMAN FUNCTIONING', which works towards understanding, intervening and promoting well-being and excellence of human beings. The laboratory is equipped with tools and software like EEG Neurofeedback System, E-prime, Speech recognition software, Wisconsin Card Sorting Test, IOWA Gambling Task, Stroop Test, SPM, NEO-PI-R, Emotional Intelligence Questionnaire, and Social Responsiveness Scale etc.

PSYCHOLOGY LABORATORY



COMPUTATIONAL SOCIAL SCIENCE LABORATORY

The **CSS Laboratory** is a high-impact research facility within SoLA, equipped with software which facilitates qualitative and quantitative research in the Social Sciences. The major focus is on themes in computational sociology and computational economics. The lab is equipped with software like NetLogo, R, SPSS, Tableau, Rapid-Miner, etc.



॥ त्वं ज्ञानमयो विज्ञानमयोऽसि ॥

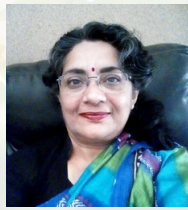
INDUSTRY CONNECT TEAM

Industry Connect, encompassing Placements, Internships and other collaborations with Industry, is led by an internal committee comprising of the following Faculty Members as well as Expert Industry Professionals.

Faculty



Dr. Farhat Naz
Associate Professor
(Head of the School of Liberal Arts)



Prof. Chhanda Chakraborti
Visiting Professor



Dr. Ankita Sharma
Associate Professor



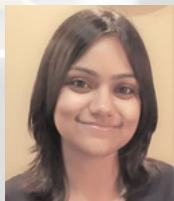
Dr. Vidya Sarveswaran
Associate Professor



Dr. Parichay Patra
Assistant Professor



Dr. Rachel Philip
Assistant Professor



Dr. Ruhi Sonal
Assistant Professor



Dr. Akanksha Choudhary
Assistant Professor



Dr. Gurujegan Murugesan
Assistant Professor



Dr. Gopa Kumar
Assistant Professor

External Advisors



Dr. Lipika Dey,
Chief Scientist
TCS Research & Innovation



Mr. Bhupesh Dinger,
Director, Enrich &
Member
Board of Governors,
IIM-Raipur



Mr. Soumitra Poddar,
Founding Partner,
Strategic Services
Consulting

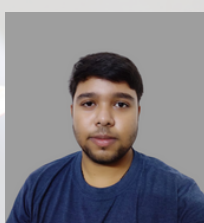
Student Representatives



Manya Khanna, MSc CSS



Niharika Maiti, MSc CSS



Ratikant Dehury, MSc CSS



Minal Mehta, PhD



Jyoti Sharma, PhD



॥ त्वं ज्ञानमयो विज्ञानमयोऽसि ॥

CAREER PREPARATORY PROGRAMS

In cooperation with experienced professionals and experts as well as the Career Development Cell of IIT Jodhpur, the School of Liberal Arts inculcates skills that are essential for its graduating students so that they may strategize their career paths as they navigate the professional world.

The students of the School of Liberal Arts participate in many activities focusing on Career Planning, Counseling, Research and Innovation, Industrial Relations, Entrepreneurship, Training, and Placements.

These help students to refine facets of their personality, verbal and written communication. This preparation equips students with the following:

- writing customized resumes
- corporate etiquette
- interview skills
- familiarity with participating in group discussions
- leadership and teamwork skills

Other activities such as internships, participation in Winter School, interaction with industry professional etc. also prepare students for engagement with relevant industrial problems.

Connect With Us

We invite you to learn more about our students and programs. For information regarding placements, collaborations and industry connect, please feel free to reach out to us at **placement@sola.iitj.ac.in**.

Our Social Media Handles

